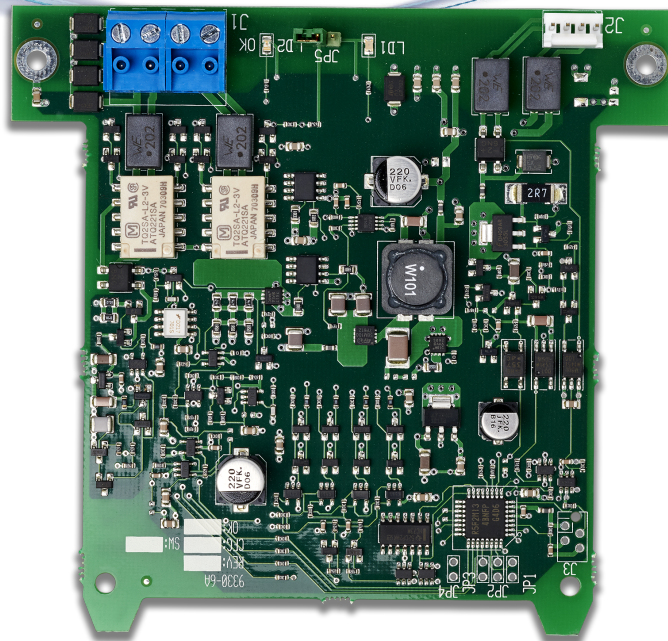


PRODUCT LEAFLET






COM-loop repeater 4585



FEATURES

- One new 350 mA SUB-loop per expansion board
- Mounted as an expansion board inside the External power supply 4466
- Supports auto-addressing
- Up to 4 expansion boards on each loop

DATA

-  24 V DC, via 4466
-  - 5 to +40 °C
-  < 95%
-  108x114x15 mm
-  55 g

GENERAL

- Tested and approved according to EN54-18
- VdS approval: G219025
- CPR: 0786-CPR-21627

RELATED PRODUCTS

- 4466 - External power supply
- 4464 - 2 voltage outputs board